

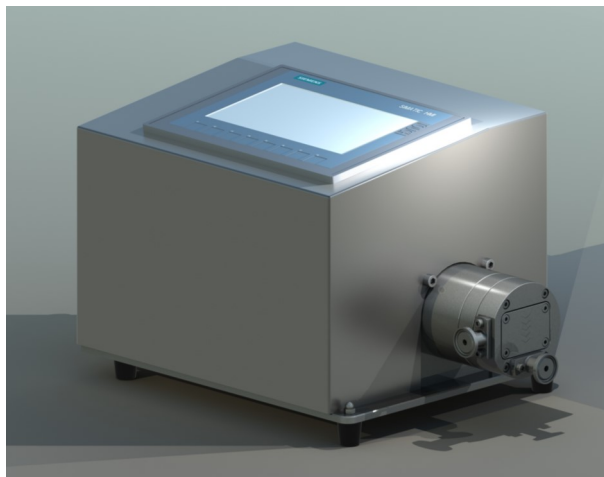
Lucksun DDP Series Pump

Shanghai Lucksun Flowtech Co., Ltd
Address : North Block, Building No 1, No 98,
Lane 100, Jiuguan Road, Shanghai, China
Tel : 86-21-57113911
Website : www.Lucksun-flowtech.com
E-mail : Lucksun_sales@163.com



⇒ Technical Information:

◇ DDP01 SWE/TB2/R/CAR (Intelligent Pump, 7" control panel)



Features and Benefits

- Intelligent control panel, built-in PLC and logic control program
- Drainable 3-diaphragms pump design
- Low shear rate, gentle transfer
- Easy to expel air bubbles
- Sanitary pump, CIP & SIP are allowed
- Good flow accuracy, good reproducibility
- Dry run, good self-suction
- Good linear accuracy and high turn down ratio
- Can long time running on low speed
- Low pulsation
- No wear particles generated on running
- Non-metal parts complied with FDA and USP
- Metal wetted parts have 3.1B and roughness Cert.

⇒ Technical Data:

Type	DDP01SWE/TB2/R/CAR
Flow rate maximum (L/Hour)	60
Flow range on stable flow (L/hour)	0.3-60
Flow range on stable pressure (L/hour)	1-60
Max pressure (Bar) (<40°C)	6
Max pressure (Bar) (>40°C)	4
Eccentric shaft angle	3°
Shaft diameter	7 mm
Suction height (Meter)	0.5
Displacement/Revolution (mL)	0.5
Total volume of pump chamber (mL)	8.9
Connector size	1/4"TC ⁽¹⁾
Internal diameter of connector	4.7 mm
Clamp flange diameter	25.5 mm
Connector direction	Left in front out ⁽²⁾
Wetted parts	Stainless Steel 316L
Other options of wetted parts	N,H,D,T,P,F ⁽³⁾
Roughness of internal surface	Ra<0,4um
Material of diaphragm	TPE
Material of check valve	EPDM
Material of O-ring	EPDM
CIP	YES
SIP	YES
Shaft and bearing housing	Stainless Steel 316
Motor	Servo motor
Motor power	200W
Motor rated speed	2000RPM
Power supply	1x220V 50HZ, China Plug
Forced cooling fan	Integrated
Power supply to cooling fan	Integrated



Reference Flow
by automatic
calculation



Pressure/Flow PID
Running by external
sensor



Run Time
Setting



Overpressure
Alarm by external
sensor



Start & Stop



Calibration &
Distribution



External Sensor
Tracker (Analog
Input)



Data log and
Alarm log with
USB stick



Parameter
Setting



Speed Running

Notes:

- (1) Options for connectors size : 1/8" Hose Barb, 3/8"TC ;
(2) Options for connectors direction : Recommended direction:
left in/front out, other options: Right in/front out, Top in/front out
and Down in/front out.
(3) Options for wetted parts : N-904L ; H-Hastelloy alloy
C276 ; D-Duplex stainless steel 2507 ; T-Titanium ; P-PP ; F-
PVDF ; and other materials ;

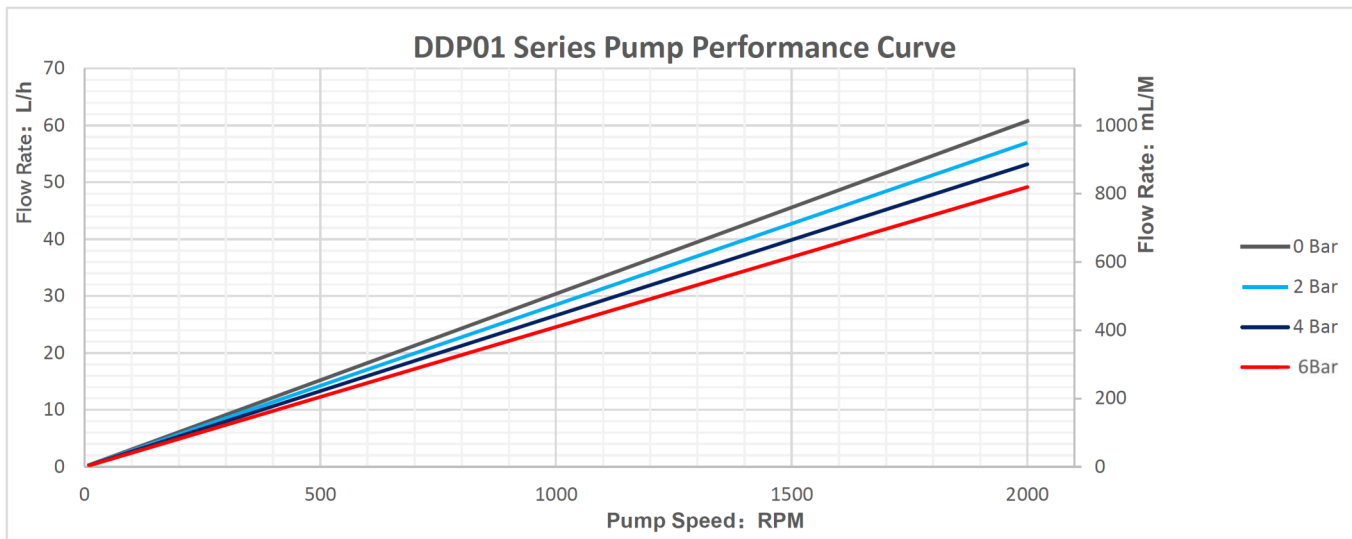
Above options, can be found on our <Products ordering
code> . Products code shall be changed relevantly. Other re-
quest, please contact our company or local distributor.

Lucksun DDP Series Pump

Shanghai Lucksun Flowtech Co., Ltd
Address : North Block, Building No 1, No 98,
Lane 100, Jiugan Road, Shanghai, China
Tel : 86-21-57113911
Website : www.Lucksun-flowtech.com
E-mail : Lucksun_sales@163.com



⇒ Performance Curve:



Above data based on the test media is water, viscosity and specific gravity is 1, on ambient temperature.

⇒ Outline Dimension:

