

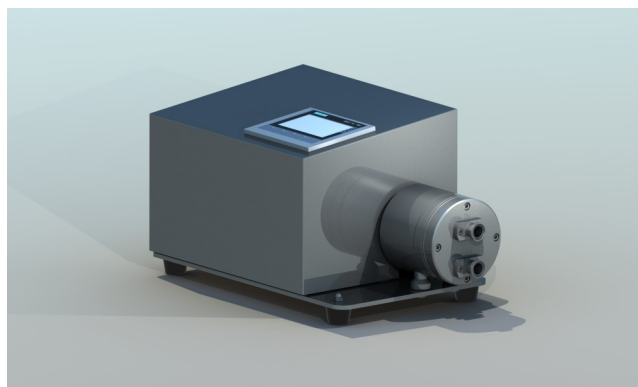
# Lucksun DDP Series Pump

Shanghai Lucksun Flowtech Co., Ltd  
Address : North Block, Building No 1, No 98,  
Lane 100, Jiugan Road, Shanghai, China  
Tel : 86-21-57113911  
Website : www.Lucksun-flowtech.com  
E-mail : Lucksun\_sales@163.com



## ⇒ Technical Information:

- ◇ DDP10 SWE/TB1/R/CAR (Intelligent Pump)
- ◇ DDP20 SWE/TB1/R/CAR (Intelligent Pump)



## Features and Benefits

- Intelligent control panel, built-in PLC and logic control program
- Drainable 4-diaphragms pump design
- Low shear rate, gentle transfer
- Easy to expel air bubbles
- Sanitary pump, CIP & SIP are allowed
- Good flow accuracy, good reproducibility
- Dry run, good self-suction
- Good linear accuracy and high turn down ratio
- Can long time running on low speed
- Low pulsation
- No wear particles generated on running
- Non-metal parts complied with FDA and USP
- Metal wetted parts have 3.1B and roughness Cert.

## ⇒ Technical Data:

Type	DDP10SWE/TB1/R/CAR	DDP20SWE/TB1/R/CAR
Flow rate maximum (L/Hour)	850	1200
Flow range on stable flow (L/hour)	6-850	10-1200
Flow range on stable pressure (L/hour)	100-850	150-1200
Max pressure ( Bar ) (<40°C)	6	6
Max pressure ( Bar ) (>40°C)	4	4
Eccentric shaft angle	3°	5°
Shaft diameter	14mm	14mm
Suction height ( Meter )	2	3
Displacement/Revolution (mL)	6.7	9.3
Total volume of pump chamber ( mL )	82	82
Connector size	3/4"TC <sup>(1)</sup>	3/4"TC <sup>(1)</sup>
Internal diameter of connector	15.75mm	15.75mm
Clamp flange diameter	25.5mm	25.5mm
Connector direction	Up in Down out <sup>(2)</sup>	Up in Down out <sup>(2)</sup>
Wetted parts	Stainless Steel 316L	Stainless Steel 316L
Other options of wetted parts	N,H,D,T,P,F <sup>(3)</sup>	N,H,D,T,P,F <sup>(3)</sup>
Roughness of internal surface	Ra<0,4um	Ra<0,4um
Material of diaphragm	TPE	TPE
Material of check valve	EPDM	EPDM
Material of O-ring	EPDM	EPDM
CIP	YES	YES
SIP	YES	YES
Shaft and bearing housing	Stainless Steel 316	Stainless Steel 316
Motor	Servo motor	Servo motor
Motor power	750W	750W
Motor rated speed	2200RPM	2200RPM
Motor power supply	1x220V	1x220V
Forced cooling fan	60W	60W
Power supply to cooling fan	1x220V	1x220v



Display Reference Flow



Constant Pressure/Flow Running



Running Time Setting



Overpressure Alarm



Start & Stop



Calibration & Distribution



External Sensor Signal Display (Pressure/Flow)



Data Recording and Export



Parameter Setting and Modification

### Notes:

- ( 1 ) Options for connectors size : 1/2"TC ;
- ( 2 ) Options for connectors direction : Recommended direction: front ( Up in down out), direction could be rotated.
- ( 3 ) Options for wetted parts : N-904L ; H-Hastelloy alloy C276 ; D-Duplex stainless steel 2507 ; T-Titanium ; P-PP ; F-PVDF ; and other materials ;

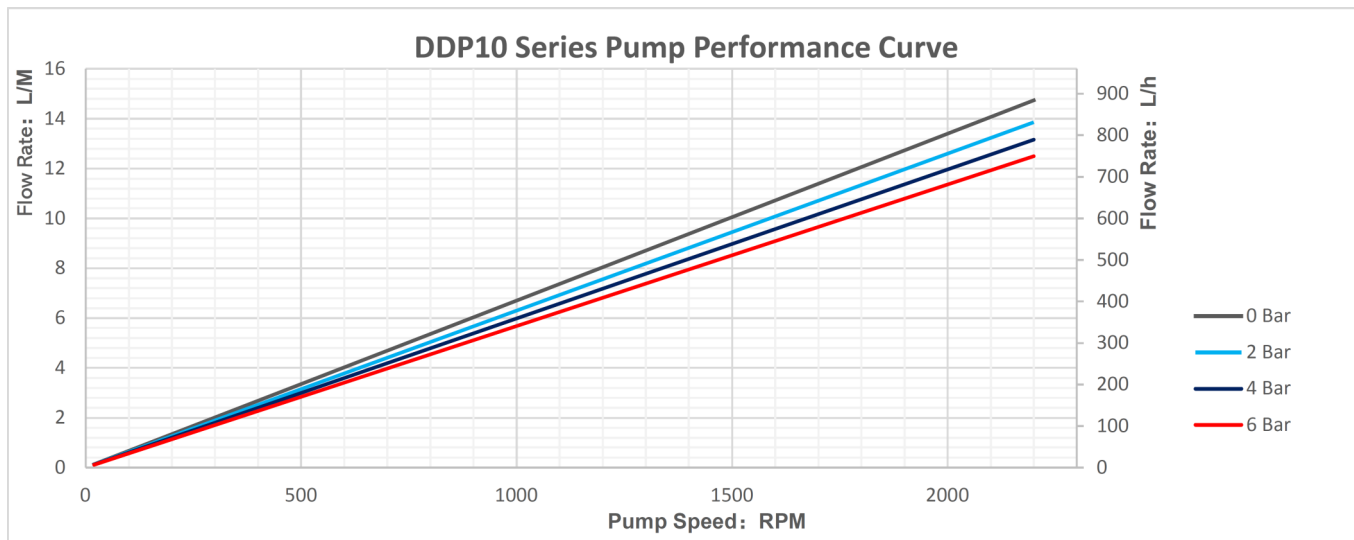
Above options, can be found on our <Products ordering code> . Products code shall be changed relevantly. Other request, please contact our company or local distributor.

# Lucksun DDP Series Pump

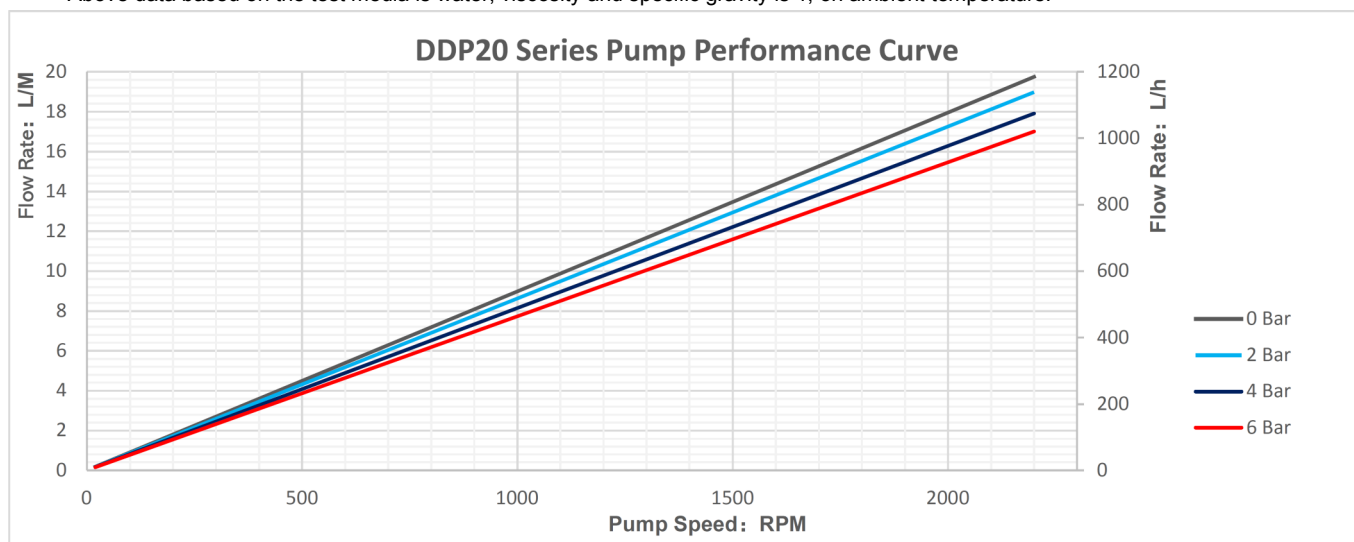
Shanghai Lucksun Flowtech Co., Ltd  
Address : North Block, Building No 1, No 98,  
Lane 100, Jiugan Road, Shanghai, China  
Tel : 86-21-57113911  
Website : www.Lucksun-flowtech.com  
E-mail : Lucksun\_sales@163.com



## ⇒ Performance Curve:



Above data based on the test media is water, viscosity and specific gravity is 1, on ambient temperature.



Above data based on the test media is water, viscosity and specific gravity is 1, on ambient temperature.

## ⇒ Outline Dimension:

